

PROPERTY OF PALLET REPAIR SYSTEMS INC. JACKSONVILLE IL AND IS LOANED TO THE RECIPIENT SUBJECT TO RETURN UPON DEMAND. IT'S CONTENTS ARE CONFIDENTIAL AND MUST NOT BE COPIED OR SUBMITTED TO OUTSIDE PARTIES FOR USE OR EXAMINATION.

UNLESS OTHERWISE SPECIFIED

DIM TOLERANCE: INCHES
 ONE PLACE: +/- .10
 TWO PLACES: +/- .050
 ANGLES: +/- 1
 () INDICATES REF DIM

QTY: 1

MODEL:

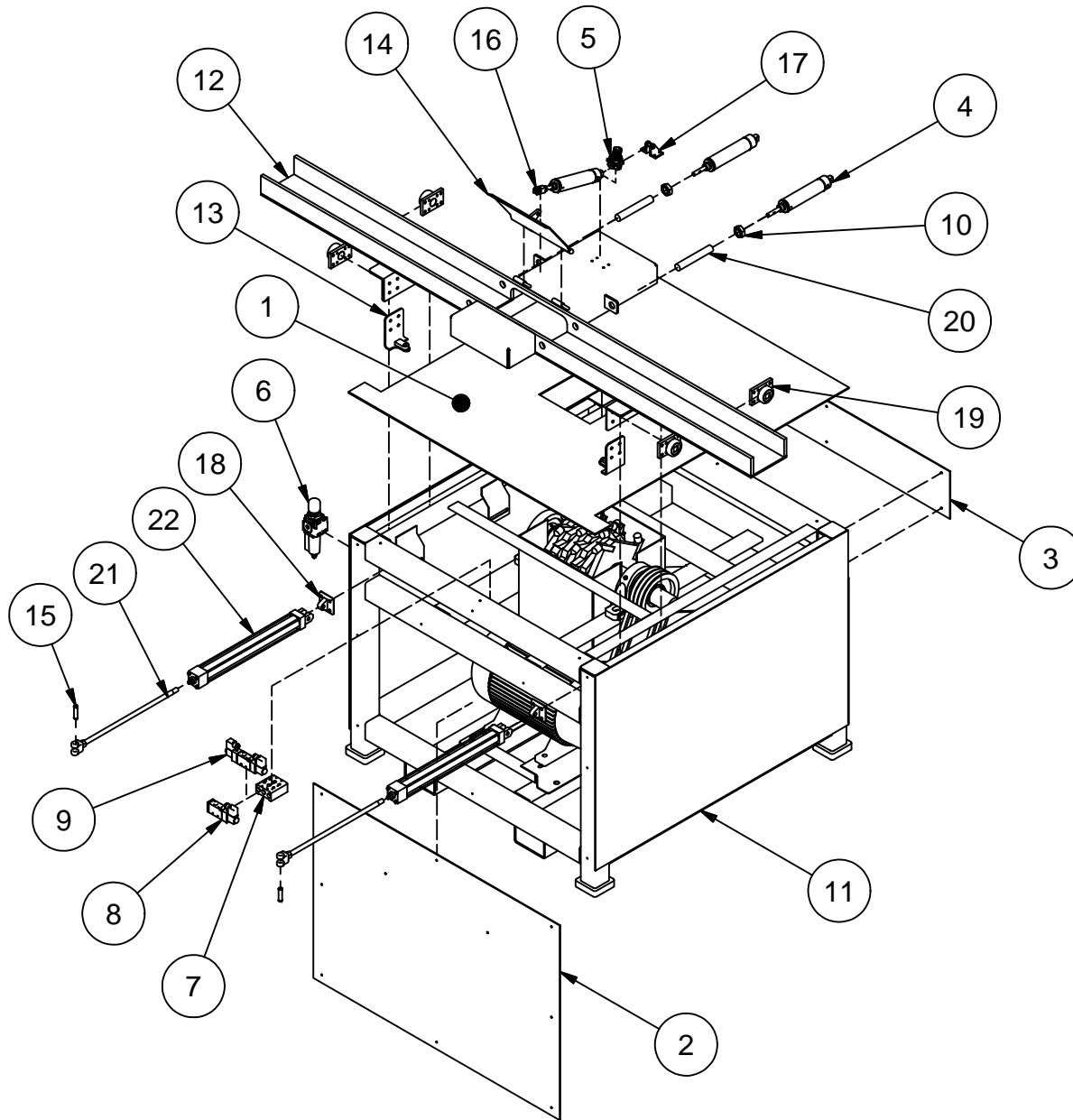
NEXT ASSY:

MATERIAL: FINAL ASSEMBLY SCALE: NTS

DRAWN BY: T. LOCHER DATE: 3-31-17

DESCP: BOARD NOTCHER

SHEET NO: 1 OF 3 PART NO: BNA-10A REV: A



PARTS LIST

ITEM	PART	DESCRIPTION	QTY
1	23032X	SHEET .1875 (48.25 x 49.75)	1
2	23058	SHEET .125 (16.34375 X 23.5)	1
3	23101	SHEET .125 (8 X 48.25)	1
4	243-P	BIMBA - 1-3/4B 3S AIR CYLINDER	3
5	34200311	1/4 REGULATOR	1
6	AFR-3233-M	AIR REGULATOR/FILTER	1
7	AM-532	NITRA PNEUMATIC VALVE MANIFOLD	1
8	AVS-5312-2 4D	NITRA PNEUMATIC SOLENOID VALVE	1
9	AVS-5322-2 4D	NITRA PNEUMATIC SOLENOID VALVE	1
10	BIMBA NUT	RETAINING NUT	2
11	BNW-1600A	BASE FRAME WELDMENT	1
12	BNW-2010A	CARRIAGE WELDMENT	1
13	BNW-2323	AIR CYL BRKT WELDMENT	2
14	BNW-2400	CARRIAGE DOOR WELDMENT	1
15	CP500	BIMBA TRD CLEVIS PIN	2
16	D-231-3	D-231-3 ROD CLEVIS	1
17	D-620	D-620 PIVOT BRACKET	1
18	EB-500	BIMBA TRD EYE BRACKET	2
19	HVB-054	COMBINED HEAVY RAIL BEARING ASSEMBLY	4
20	PRS CL PL	C R 1 X 6 1/2	2
21	RC437	THREADED ROD CLEVIS 7/16X20 THD	2
22	TA-MP1-1.5 X17 MPR	BIMBA AIR CYL, B=1-1/2 x 17" STROKE	2

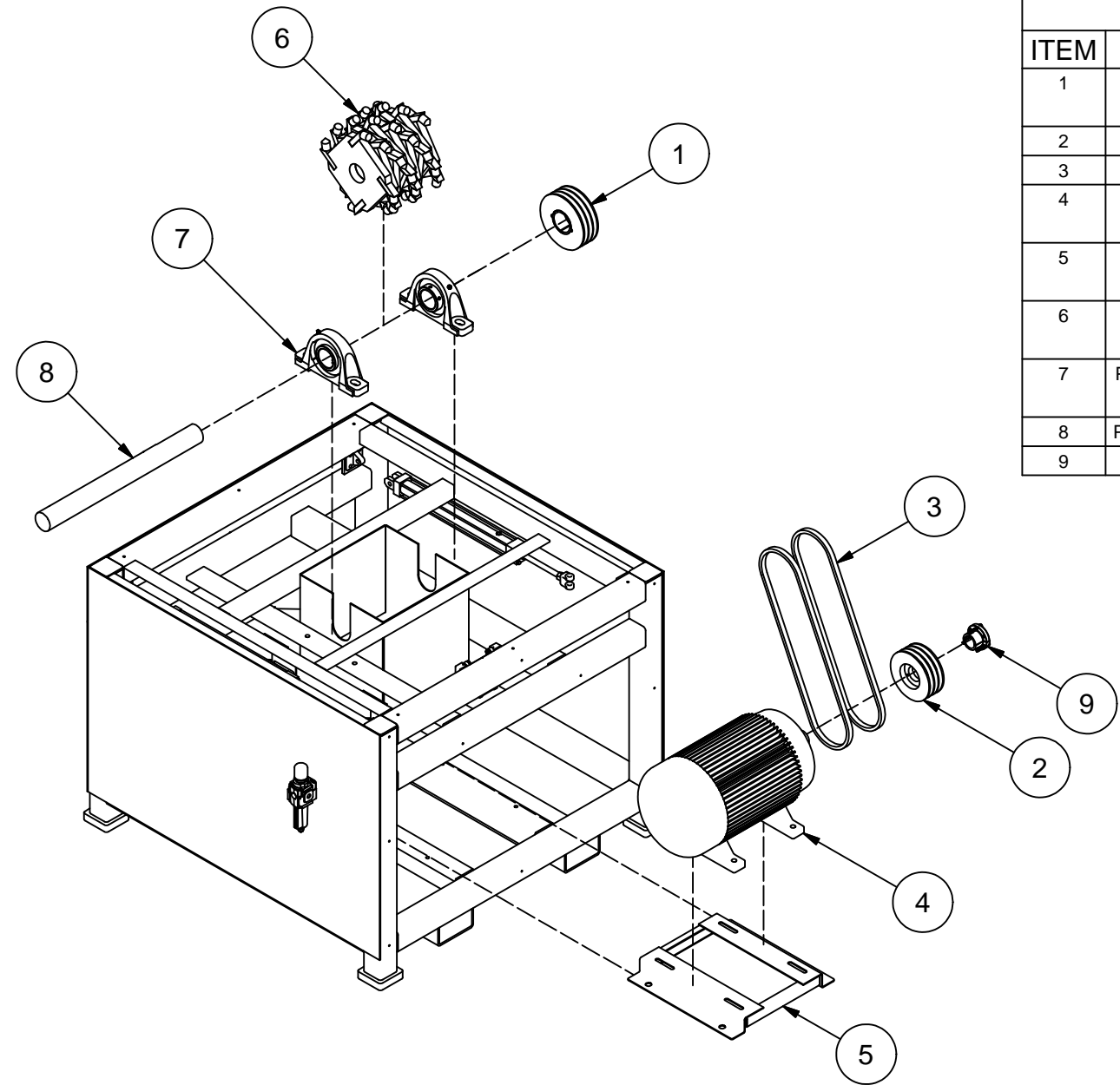
PRs
PALLET REPAIR SYSTEMS, INC.

PROPERTY OF PALLET REPAIR SYSTEMS INC. JACKSONVILLE IL AND IS LOANED TO THE RECIPIENT SUBJECT TO RETURN UPON DEMAND. IT'S CONTENTS ARE CONFIDENTIAL AND MUST NOT BE COPIED OR SUBMITTED TO OUTSIDE PARTIES FOR USE OR EXAMINATION.

UNLESS OTHERWISE SPECIFIED
 DIM TOLERANCE: INCHES
 ONE PLACE: +/- .10
 TWO PLACES: +/- .050
 ANGLES: +/- 1
 () INDICATES REF DIM

QTY: 1
 MODEL:
 NEXT ASSY: FINAL

MATERIAL:	FINAL ASSEMBLY	SCALE:	NTS
DRAWN BY:	T. LOCHER	DATE:	3-31-17
DESCP:	BOARD NOTCHER		
SHEET NO:	2 OF 3	PART NO:	BNA-10A
		REV:	A



PARTS LIST

ITEM	PART	DESCRIPTION	QTY
1	118316	DODGE: TAPER-LOCK SHEAVE	1
2	3B60SD	QD SHEAVE, 3G, A/B, 6.35" DIA	1
3	6X998G	V-BELT B58	2
4	G150033	20HP 3600RPM 460V 3PH 50/60HZ 254T	1
5	MTA-BSE-W256T	20 HP MOTOR MOUNT	1
6	NSB-10	NOTCHER HEAD 12"Dx9"Wx2.5"Bx8	1
7	P2BSCM20	DODGE: 2 BOLT PILLOW BLOCK	2
8	PRS-908NS	BEARING - 2-1/2" BORE TGP 2-1/2 x 26 W/ KEYWAY	1
9	SDX1.625	1-5/8 QD BUSHING (W/ 3B60SD)	1

PRRS
PALLET REPAIR SYSTEMS, INC.

PROPERTY OF PALLET REPAIR SYSTEMS INC. JACKSONVILLE IL AND IS LOANED TO THE RECIPIENT SUBJECT TO RETURN UPON DEMAND. IT'S CONTENTS ARE CONFIDENTIAL AND MUST NOT BE COPIED OR SUBMITTED TO OUTSIDE PARTIES FOR USE OR EXAMINATION.

UNLESS OTHERWISE SPECIFIED
 DIM TOLERANCE: INCHES
 ONE PLACE: +/- .10
 TWO PLACES: +/- .050
 ANGLES: +/- 1
 () INDICATES REF DIM

QTY: 1
 MODEL:
 NEXT ASSY: FINAL

MATERIAL:	FINAL ASSEMBLY	SCALE:	NTS
DRAWN BY:	T. LOCHER	DATE:	3-31-17
DESCP:	BOARD NOTCHER		
SHEET NO:	3 OF 3	PART NO:	BNA-10A
REV:			A